

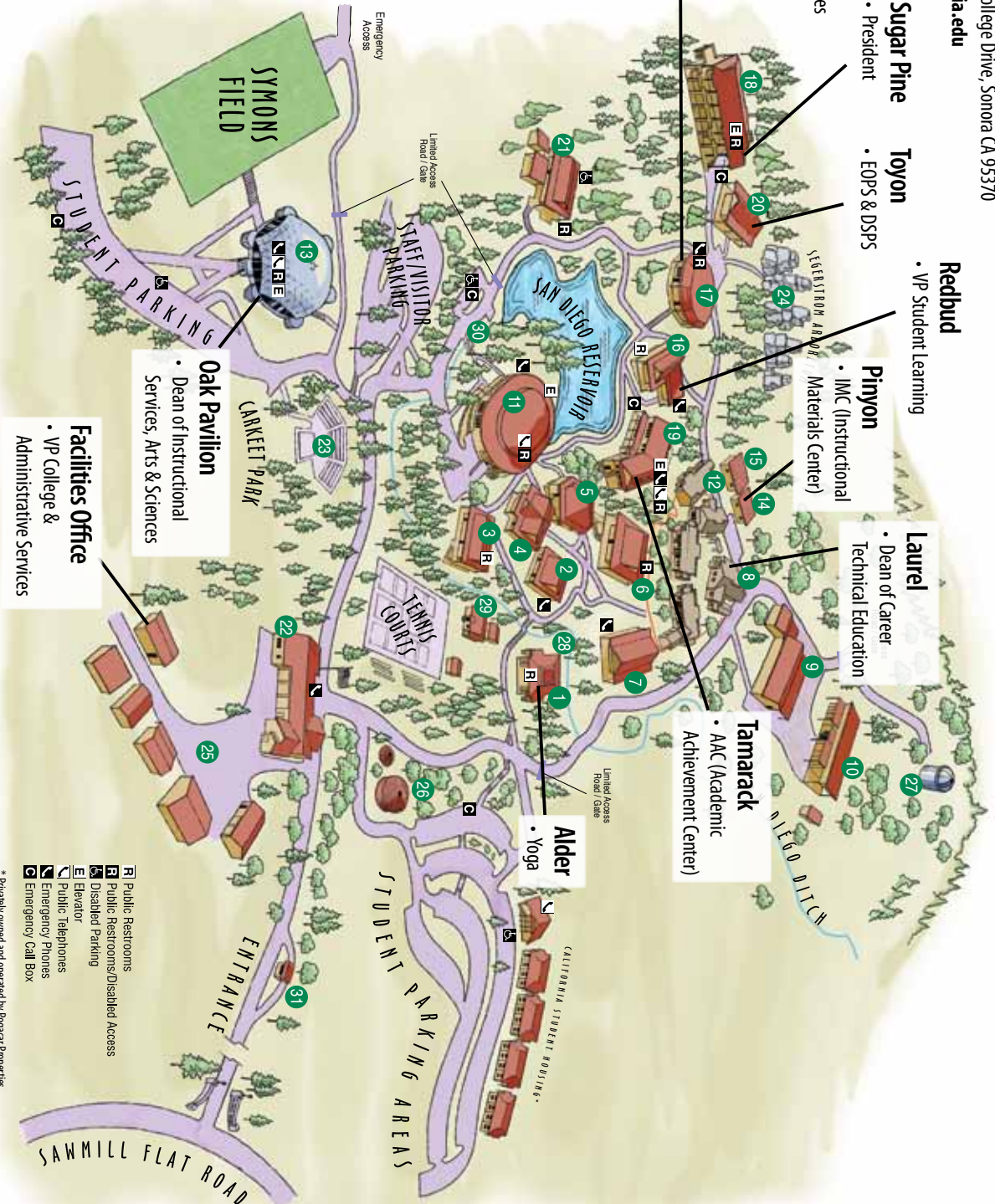


Admissions & Records 209.588.5231 or 5233
 11600 Columbia College Drive, Sonoma CA 95370
www.gocolumbia.edu

- Sequoia**
 - Dean of Student Services
 - Admissions & Records
 - Business Services
 - Financial Aid
 - Veterans Benefits
 - Counseling
 - Career Center
 - TRIO Student Services
 - CalWORKS
- Sugar Pine**
 - President
- Toyon**
 - EOPS & DSPS
- Redbud**
 - VP Student Learning
- Pinyon**
 - IMC (Instructional Materials Center)
- Laurel**
 - Dean of Career Technical Education
- Tamarack**
 - AAC (Academic Achievement Center)
- Alder**
 - Yoga

KEY

- 1 Alder
- 2 Aspen
- 3 Buckeye
- 4 Cedar
- 5 Dogwood (Forum Bldg)
- 6 Fir
- 7 Juniper (College Nurse)
- 8 Laurel (Child Care Center)
- 9 Madrone
- 10 Mahogany
- 11 Manzanita
- 12 Maple
- 13 Oak Pavilion
- 14 Pinyon
- 15 Ponderosa
- 16 Redbud
- 17 Sequoia
- 18 Sugar Pine
- 19 Tamarack Hall
- 20 Toyon
- 21 Willow
- 22 Public Safety Center / Firehouse
- 23 Amphitheater
- 24 Arboretum Nature Trail
- 25 Warehouse, Shipping/Receiving, Transportation & Maintenance
- 26 Me-Wuk Cultural Center
- 27 Observatory
- 28 Starting Point, Jogging Trail
- 29 Davis Cabin
- 30 Transit Stop
- 31 Information/Toll Booth



Oak Pavilion
 • Dean of Instructional Services, Arts & Sciences

Facilities Office
 • VP College & Administrative Services

- Public Restrooms
- Public Restrooms/Disabled Access
- Disabled Parking
- Elevator
- Public Telephones
- Emergency Phones
- Emergency Call Box

* Privately owned and operated by Pogacar Properties

CAMPUS MAP

From January 2014 through summer 2015, upper level Manzanita Building services will be relocated as shown.